

Four new species and two new records of genus *Zeugophora* (Coleoptera, Megalopodidae, Zeugophorinae) from China

Kai-Qin Li¹, Hong-Bin Liang²

1 Kunming Natural History Museum of Zoology, Kunming Institute of Zoology, Chinese Academy of Sciences, Kunming 650223, China **2** Key Laboratory of Zoological Systematics and Evolution, Institute of Zoology, Chinese Academy of Sciences, Beijing 100101, China

Corresponding author: Hong-Bin Liang (lianghb@ioz.ac.cn)

Academic editor: M. Schmitt | Received 21 April 2020 | Accepted 4 July 2020 | Published 12 October 2020

<http://zoobank.org/BE4102C1-93CF-45CF-83BF-D578B8F73751>

Citation: Li K-Q, Liang H-B (2020) Four new species and two new records of genus *Zeugophora* (Coleoptera, Megalopodidae, Zeugophorinae) from China. ZooKeys 975: 51–78. <https://doi.org/10.3897/zookeys.975.53472>

Abstract

Four new species of the subgenus *Pedrillia* Westwood, 1864 are described from southwest and central China: *Zeugophora* (*Pedrillia*) *euonymorum* **sp. nov.**, *Zeugophora* (*Pedrillia*) *flavithorax* **sp. nov.**, *Zeugophora* (*Pedrillia*) *trifasciata* **sp. nov.** and *Zeugophora* (*Pedrillia*) *yuae* **sp. nov.** Two species are recorded for the first time in China and redescribed: *Zeugophora* (*Zeugophora*) *turneri* Power, 1863 and *Zeugophora* (*Pedrillia*) *nigricollis* Jacoby, 1885. To date, a total of 35 Zeugophorinae species has been recognized in China.

Keywords

Celastraceae, new record, new species, *Pedrillia*, *Zeugophora*, Zeugophorinae

Introduction

The genus *Zeugophora* Kunze, 1818 belongs to the subfamily Zeugophorinae in the family Megalopodidae. A total of 29 species of the subfamily Zeugophorinae has been recorded in China (Lee and Cheng 2007; Li and Liang 2018). The Chinese fauna

consists of *Zeugophora* with two subgenera *Pedrillia* Westwood, 1864 and *Zeugophora* Kunze, 1818. However, the status of *Pedrillia* Westwood is controversial, and it has been treated as a distinct genus by some authors (Baly 1873; Jacoby 1908; Chûjô 1935, 1937; Tan et al. 1980; Yu and Yang 1997), or as a subgenus of *Zeugophora* (Crowson 1946; Monrós 1959; Gressitt and Kimoto 1961; Chen and Pu 1962; Kimoto and Gressitt 1979; Medvedev 1985, 1997; Reid 1989, 1992, 1995; Schöller 2009; Warchałowski 2010), or even a synonym of *Zeugophora* (Bryant 1943; Sekerka and Vives 2013). In the present paper, we treat *Pedrillia* as a subgenus as we did previously (Li and Liang 2018).

In recent years, a number of expeditions have been made for collecting specimens of *Zeugophora*. On Songshan Mountain near Beijing City, a quite large number of *Zeugophora* were collected using Malaise traps, a tool which was originally used to collect wasps and flies. In Ningxia and Guizhou, *Zeugophora* specimens were collected by beating plants in the family Celastraceae. In the museum of the Kunming Institute of Zoology, two specimens of *Zeugophora* were sorted out from samples collected for ecological monitoring. After carefully comparison with types and named specimens, we found four species new to science and two records new to China from said specimens. Their descriptions are given below.

Materials and methods

Abbreviations:

KIZ	Kunming Natural History Museum of Zoology, Kunming Institute of Zoology, Chinese Academy of Sciences, Kunming, China.
IZCAS	National Zoological Museum of China, Institute of Zoology, Chinese Academy of Sciences, Beijing, China.
NHMUK	The Natural History Museum, London, UK.

Species studied

Thirteen species belonging to one genus and two subgenera of Zeugophorinae were studied and examined (Table 1). All specimens studied in this paper are deposited in KIZ unless otherwise stated.

Methods

Dry specimens were soaked in boiled water for 1–2 hours. The lateral margin of the abdomen was opened and the genitalia were pulled out of the abdomen with fine forceps, or the whole abdomen was removed from the specimen. The genitalia or abdomen were soaked in a warm solution of 10% KOH or NaOH for 10–20 minutes

Table 1. Species of Zeugophorinae studied and examined.

Genus (Subgenus)	Species	Number of specimens	Depository
<i>Zeugophora</i> (<i>Zeugophora</i>)	<i>turneri</i> Power, 1863	61	IZCAS, KIZ
	<i>cribrata</i> Chen, 1974	8	IZCAS
	<i>cyanea</i> Chen, 1974	16	IZCAS
	<i>scutellaris</i> Suffrian, 1840	15	IZCAS
<i>Zeugophora</i> (<i>Pedrillia</i>) bbe	<i>annulata</i> Baly, 1873	25	IZCAS, KIZ
	<i>bicolor</i> Kraatz, 1879	6	IZCAS
	<i>euonymorum</i> Li & Liang, sp. nov.	24	IZCAS, KIZ
	<i>flavithorax</i> Li & Liang, sp. nov.	3	KIZ
	<i>maculata</i> (Chûjô, 1941)	8	KIZ
	<i>nigricollis</i> Jacoby, 1885	2	KIZ
	<i>tricolor</i> Chen & Pu, 1962	5	IZCAS, KIZ
	<i>trifasciata</i> Li & Liang, sp. nov.	2	KIZ
	<i>yuae</i> Li & Liang, sp. nov.	8	IZCAS, KIZ

as a treatment. The treatment time depended upon the degree of sclerotization of the genitalia in different species. After treatment, these organs were washed with water, then dyed with Chlorazol Black E for one second. The genitalia were then detached and transferred to glycerin for observation, photography, and preservation.

All measurements were made using a Nikon SMZ1500 or a Nikon SMZ18 stereoscopic microscope with the aid of an ocular micrometer. Body length (BL) = the linear distance along the midline from the anterior margin of the labrum to the apex of the elytra; body width (BW) = elytra width (EW) = the maximum linear distance across the elytra; pronotum length (PL) = the linear distance along the median line of the pronotum; pronotum width (PW) = the linear distance across the widest part of the pronotum; pronotum width at the apex (PAW) = the linear distance across the apex of the pronotum; pronotum width at the base (PBW) = the linear distance across the base of the pronotum; elytra length (EL) = the linear distance from the base of the elytra to the apex of the sutural angle; median lobe length = the linear distance from the base to the apex; median struts length = the linear distance from the base to the apex. Ratios cited in descriptions are based on these measurements.

Photographs of male genitalia were taken using a Nikon SMZ-1500 stereoscopic dissecting microscope fitted with a Cannon 450D digital camera or Nikon SMZ18 stereoscopic dissecting microscope fitted with a Nikon D610 digital camera. For each final image, several photographs were taken using different focal planes, combined with Helicon Focus software to obtain one synthesized photograph, and finally edited with Adobe Photoshop software.

Morphological terminology for male genitalia follows Snodgrass (1935), Verma (1996), Chûjô (1952, 1953), Kasap and Crowson (1985), Li and Liang (2018), and Li et al. (2013).

Taxonomy

Genus *Zeugophora* Kunze, 1818

Subgenus *Zeugophora* Kunze, 1818

***Zeugophora* (*Zeugophora*) *turneri* Power, 1863, new record**

Figures 1–11

Zeugophora turneri Power, 1863: 8735.

Zeugophora rufotestacea Kraatz, 1871: 162.

Specimens examined. Sixty-one males and females (IZCAS, KIZ), China, Beijing, Songshan, Haituoshan, Xiaohunpo, 1100 m, 2013.ix.14, Bo Liu coll.

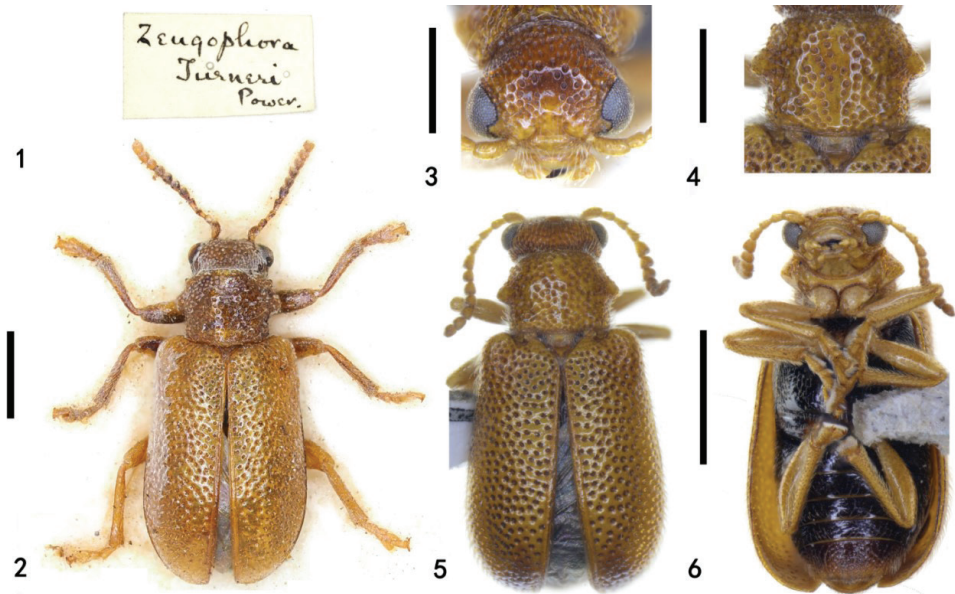
Diagnosis. Antennae, head, pronotum, scutellum, elytra, prosternum and legs yellowish brown; apex of mandible black, mesoventrite, metaventrite and abdominal ventrites black; dorso-central portion of median lobe with a slender sclerite, apex of median lobe gradually narrowed.

Description. BL = 3.0–3.2 mm, BW = 1.4–1.5 mm. Antennae, head, pronotum, scutellum, elytra, prosternum and legs yellowish brown; apex of mandible black, mesoventrite, metaventrite and abdominal ventrites black.

Head: eyes prominent, inner margin with shallow canthus; center of vertex without puncture and pubescence, sides of vertex coarsely punctate and pubescent; occiput constricted, densely punctate and pubescent; frons coarsely punctate and pubescent, center concave; clypeus trapezoid, anterior margin and lateral sides with punctures and pubescence; fronto-clypeal suture prominently backwards in the center; labrum rectangular, 3 × as long as wide; antennae short, extending to the humeri, antennomere 1 swollen, antennomere 2 slightly shorter than antennomere 1, antennomere 3 as long as antennomere 1, antennomere 4 as long as antennomere 3, antennomeres 5–11 short and broad, equal in length, as long as antennomere 2, apex of antennomere 11 acute.

Thorax: PW/PL = 1.3–1.5; anterior margin slightly flattened, posterior margin arching backwards in the center, length of anterior margin nearly equal to posterior margin; anterior margin indistinct; posterior margin backwards medially; anterior and posterior groove indistinct; lateral margins subparallel at anterior portions, lateral tubercle prominent laterally, blunt at apex; disc slightly convex, coarsely punctate and pubescent; base slightly depressed. Scutellum triangular, apical margin slightly emarginate, finely punctate and pubescent.

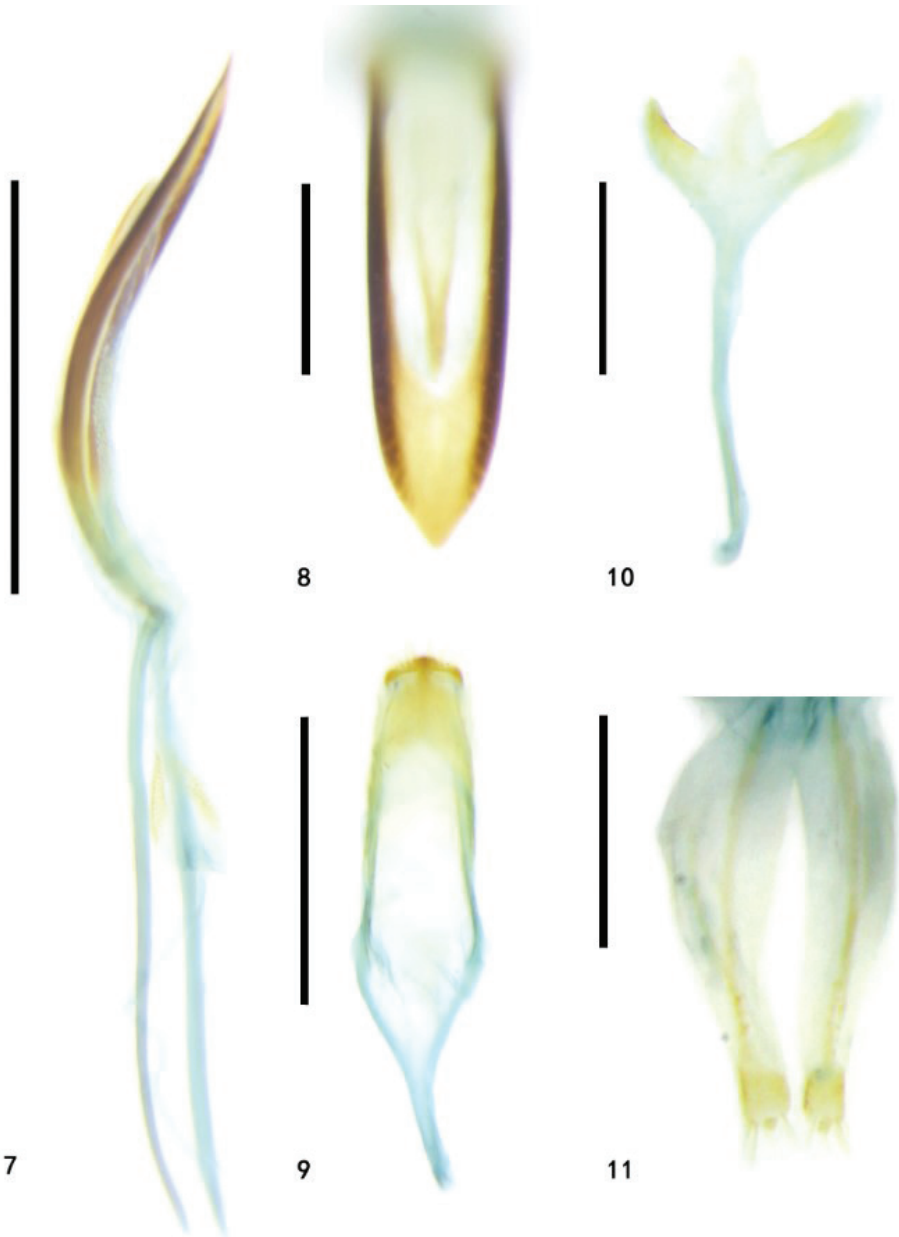
Elytra: EL/EW = 1.4–1.6; elytral humeri slightly projecting antero-laterally, humeral groove shallow; lateral margin gradually expanding from anterior to posterior, the elytra widest behind the middle, apex rounded; disc slightly convex, coarsely punctate and pubescent; elytral base coarsely punctate and pubescent; suture with one row of punctures and pubescence; epipleura narrow, with two rows of punctures and pubescence at base and one row at apex.



Figures 1–6. *Zeugophora turneri* Power. **1, 2** specimen identified by Power **1** label **2** dorsal view **3, 4** common specimen from Beijing **3** head, anterior view **4** pronotum, dorsal view **5** dorsal view **6** ventral view. Scale bars: 1.0 mm (**1, 5, 6**); 0.5 mm (**3, 4**).

Abdomen and legs: underside sparsely punctate and pubescent. Legs moderately long, femora robust. Pygidium moderately long, apical portion exposed, punctate, and pubescent. Apical margin of last abdominal ventrite slightly concave in female, slightly prominent in male. Median lobe strongly sclerotized, slender, dorso-central portion membranous with a tongue-shaped sclerite, curved in lateral view, lateral sides thin, subparallel, apex narrower than base, apical portion tongue-shaped, apex upward, sharp; median struts rod-shaped, widely separated from each other, $1.1 \times$ as long as median lobe; basal piece rod-like, short, basal portion of tegmen Y-shaped, tegminal ring with base broad and gradually narrowed to apical portion, paramere sub-square, apical margin of paramere with dense setae; endophallus membranous, with paired granulated and sclerotized areas. Spiculum long, Y-shaped, apical portion tongue-shaped, weakly sclerotized. Ovipositor moderately long, sub-triangular, base broad, apex slightly narrowed, divided into two vaginal palpi, each side with two baculi, one baculus extending from the base of the ovipositor backwards, base slightly broad, apex slightly narrowed, length of two baculi proximal to each other at base; another baculus extended from the coxite to the middle of the ovipositor; the two baculi of each side proximal to each other but not fused; coxite strongly sclerotized, cylindrical, lateral margin apex with long setae; stylus short, small, distinct.

Distribution. China (Beijing), Belarus, Czech Republic, Denmark, Estonia, Finland, the United Kingdom, Germany, Latvia, Lithuania, Norway, Poland, Sweden, Russia, Mongolia.



Figures 7–11. Genitalia of *Zeugophora turneri* Power, genitalia **7–10** male genitalia **7** median lobe and median struts, lateral view **8** median lobe, dorsal view **9** tegmen, dorsal view **10** spiculum, dorsal view **11** ovipositor, dorsal view. Scale bars: 0.5 mm (**7, 9**); 0.2 mm (**8, 10, 11**).

Host plant. *Populus tremula* (Salicaceae).

Remarks. A large number of this species was caught by Malaise trips set in Songshan for approximately four months. This species is similar to *Zeugophora cribrata*

Chen, 1974, but differs in having a brown head and pronotum; the lateral tubercle of the pronotum is more prominent; the pronotum and elytra are sparsely punctate; with the apex of the median lobe gradually narrowed (head black, pronotum brown, slightly black; lateral tubercle of the pronotum less prominent; pronotum and elytra densely punctate; and the apex of the median lobe strongly constricted in *Z. cribrata*).

This species is also similar to *Zeugophora scutellaris* Suffrian, 1840 with regards to the shape of the lateral tubercle on the pronotum, but differs in having the head, pronotum, elytra and antennae yellowish brown; the pronotal disc is finely punctate while the elytra is sparsely punctate; the dorso-central portion of the median lobe has a slender sclerite, and the apex of the median lobe is slightly broad and blunt (head and pronotum reddish brown, elytra black, antennomeres 1–4 brown, antennomeres 5–11 black; pronotal disc coarsely punctate and elytra densely punctate; the dorso-central portion of the median lobe without a sclerite, and the apex slightly narrowed and sharp in *Z. scutellaris*).

Subgenus *Pedrillia* Westwood, 1864

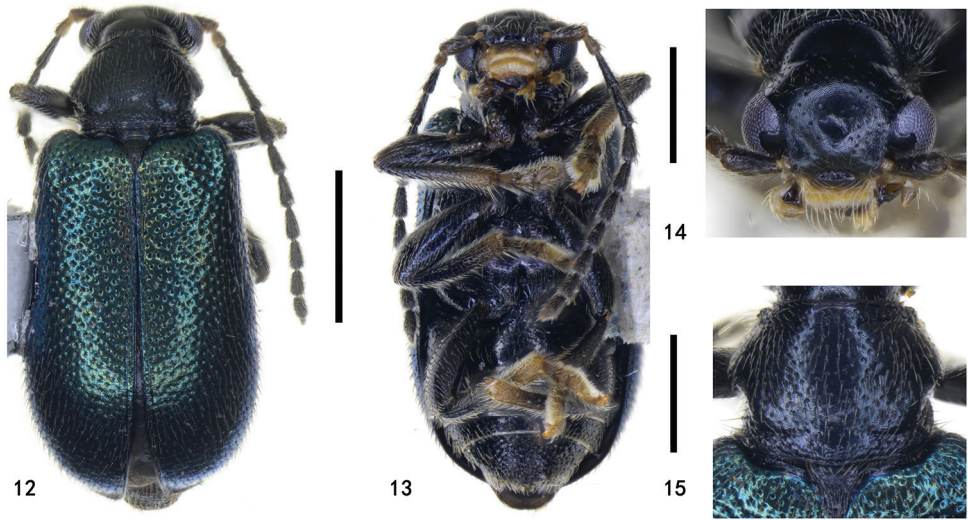
Zeugophora (Pedrillia) euonymorum sp. nov.

<http://zoobank.org/A9A6AB06-C0DE-45A2-B64F-5CE8D598820C>

Figures 12–28

Specimens examined. Holotype: male, CHINA, Ningxia, Jingyuan, Liupan Shan National Nature Reserve, Erlonghe Forest Farm, 35.33041N, 106.35110E / 2088 m, 2018.vii.29, Kaiqin Li coll., Kunming Institute of Zoology, Chinese Acad. Sci. / Holotype, *Zeugophora (Pedrillia) euonymorum* sp. nov., des. by K.Q. Li & H.B. Liang, 2020 [red label]. **Paratypes** (11 males and 12 females): 4 males and 7 females (1 male and 1 female in IZCAS), same data as holotype except Paratype *Zeugophora (Pedrillia) euonymorum* sp. nov., des. by K.Q. Li & H.B. Liang, 2020 / [yellow label]; 1 female, CHINA, Ningxia, Jingyuan, Liupan Shan National Nature Reserve, Xiaonanchuan, 35.35788N, 106.31659E / 2021 m, 2018.vii.27, Xinpu Wang coll. Ningxia University / Paratype *Zeugophora (Pedrillia) euonymorum* sp. nov., des. by K.Q. Li & H.B. Liang, 2020 / [yellow label]; 3 males, 1 female, CHINA, Ningxia, Jingyuan, Liupan Shan National Nature Reserve, Danangou, 35.48659N, 106.27045E / 2130 m, 2018.vii.28, Kaiqin Li coll. / Paratype *Zeugophora (Pedrillia) euonymorum* sp. nov., des. by K.Q. Li & H.B. Liang, 2020 / [yellow label]; 4 males and 3 females (1 male and 1 female in IZCAS) / CHINA, Guizhou, Leishan, Leigong Shan National Nature Reserve, 26.38470N, 108.20681E / 2158 m, 2019.vii.16, Kaiqin Li coll. / Paratype *Zeugophora (Pedrillia) euonymorum* sp. nov., des. by K.Q. Li & H.B. Liang, 2020 / [yellow label].

Diagnosis. Head, pronotum, scutellum, underside black; elytra with dark blue or dark green metallic luster; antennae slender, exceeding half the length of body; lateral tubercle of pronotum gradually expanding from anterior to the middle and then constricted; median lobe with basal one third tubular, slightly flattened and curved in lateral view, apex triangular and blunt.



Figures 12–15. Holotype of *Zeugophora (Pedrillia) euonymorum* sp. nov., male **12** dorsal view **13** ventral view **14** head, anterior view **15** pronotum, dorsal view. Scale bars: 1.0 mm (**12**, **13**); 0.5 mm (**14**, **15**).

Description. BL = 2.8–4.0 mm, BW = 1.3–2.0 mm. Head, pronotum, scutellum, underside black; elytra with dark blue or dark green metallic luster; mouthparts yellowish brown except mandible brown; antennae black or with antennomere 1 dark brown; legs black, sometimes basal portion of femora, apex of tibiae and most of tarsi yellow, or legs yellow.

Head: eyes prominent, inner margin with distinct canthus; vertex densely punctate and pubescent; occiput strongly constricted; frons sparsely punctate and pubescent, center with a shallow concave, lateral sides slightly depressed; clypeus rectangular, width $2 \times$ length, punctate and pubescent laterally, separated from frons by deep fronto-clypeal suture; labrum rectangular, narrower than clypeus, anterior margin with punctures and pubescence; antennae slender, exceeding half the length of body, antennomere 1 long and swollen, antennomere 2 short, half as long as antennomere 1, antennomere 3 as long as 4, slightly longer than antennomere 1, antennomeres 5–10 as long as antennomere 1, antennomere 11 acute at apex; antennomeres 1–4 sparsely punctate and pubescent, antennomeres 5–11 densely punctate and pubescent.

Thorax: PW/PL = 1.3–1.5; anterior margin slightly flattened; posterior margin backwards medially; length of anterior margin nearly equal to posterior margin; anterior groove distinct laterally, obsolete medially; posterior groove deep laterally, shallow medially; anterior portion of lateral margin subparallel, then gradually expanding from anterior portion to middle, strongly constricted behind middle; lateral tubercle rounded; behind the lateral tubercle, an oblique groove extending to base portion; disc convex with punctures and pubescence, basal portion slightly depressed; basal portion of each side slightly prominent. Scutellum triangular, slightly emarginate at apex, densely punctate and pubescent.

Elytra: EL/EW = 1.4–1.6; elytral humeri projecting antero-laterally, humeral groove shallow, lateral of humeri densely punctate and pubescent; lateral margins



Figures 16–20. Types of *Zeugophora* (*Pedrillia*) *euonymorum* sp. nov. **16–19** male genitalia of holotype **16** median lobe and median struts, lateral view **17** median lobe, dorsal view **18** tegmen, dorsal view **19** spiculum, dorsal view **20** ovipositor of paratype, dorsal view. Scale bars: 0.5 mm (**16, 18**); 0.2 mm (**17, 19, 20**).

slightly expanding from the base to the middle, widest behind the middle, apex rounded; disc slightly flattened, coarsely punctate and pubescent; suture with two rows of punctures and pubescence; epipleura narrow, two rows of punctures and pubescence at base and one row at apex.

Abdomen and legs: underside sparsely punctate and pubescent. Legs moderately long, femora robust, mid- and hind-tibiae slightly curved. Pygidium moderately long, apical portion exposed. Apical margin of last abdominal ventrite slightly prominent in male (apical margin of last abdominal ventrite nearly straight in female). Median lobe sclerotized, short and broad, slightly curved in lateral view, dorso-central portion membranous, basal one



Figures 21–24. 21 Habitat of *Zeugophora (Pedrillia) euonymorum* sp. nov. (Ningxia, Liupan Shan) 22, 23 host plant of *Zeugophora (Pedrillia) euonymorum* (*Euonymus elatus*) 24 copulation.

third tubular, lateral sides thick and parallel, apex triangular and blunt; median struts rod-shaped, widely separated from each other, approximately $2.1\text{--}2.3 \times$ as long as median lobe; basal portion of tegmen Y-shaped, tegminal ring oval-shaped, paramere tongue-shaped, apical margin of paramere with setae; endophallus membranous, with paired granulated and weakly sclerotized area. Spiculum spoon-shaped, apical margin slightly emarginate. Ovipositor moderately long, sub-rectangular, base broad, apex slightly narrowed, divided into two vaginal palpi, each side with one baculus, extending from the base of the ovipositor backwards to the coxite, baculus sclerotized, base slightly broad, apex slightly narrowed, two baculi proximal to each other at base; coxite strongly sclerotized, cylindrical, lateral margin of apex with long setae; stylus, cylindrical, short, small and distinct.

Distribution. China (Ningxia, Guizhou).

Host plant. *Euonymus elatus*, *Euonymus hamiltonianus* (Celastraceae).

Etymology. The specific name *euonymorum* refers to the host plant genus *Euonymus* (Family Celastraceae).

Remarks. This species is similar to *Zeugophora cyanea* Chen, 1974 in color, but differs in having longer antennae, the lateral tubercle of the pronotum gradually expanding from the anterior to the middle and then constricted, the lateral tubercle broader and bigger, the ratio of median struts / median lobe approximately $2.1\text{--}2.3$, basal third of median lobe tubular with the apex of the median lobe broader and blunt, the tegminal ring oval-shaped, the paramere tongue-shaped, the spiculum long and Y-shaped and with the apex prominent (shorter antennae, lateral tubercle prominent on lateral middle of pronotum, anterior margin of pronotum slightly subparallel, lateral tubercle narrow and smaller, the ratio of median struts / median lobe approximately 1.1, median lobe dorso-central portion membranous and apical portion with a slender



Figures 25–28. **25** Habitat of *Zeugophora* (*Pedrillia*) *euonymorum* sp. nov. (Guizhou, Leigong Shan) **26, 27** host plant of *euonymorum* sp. nov. (*Euonymus hamiltonianus*) **28** copulation.

and weakly sclerotized sclerite, apex of median lobe narrower and sharper, tegminal ring gradually narrowed from base to apical portion, paramere sub-square, spiculum long and Y-shaped, and apex trifid in *Z. cyanea*).

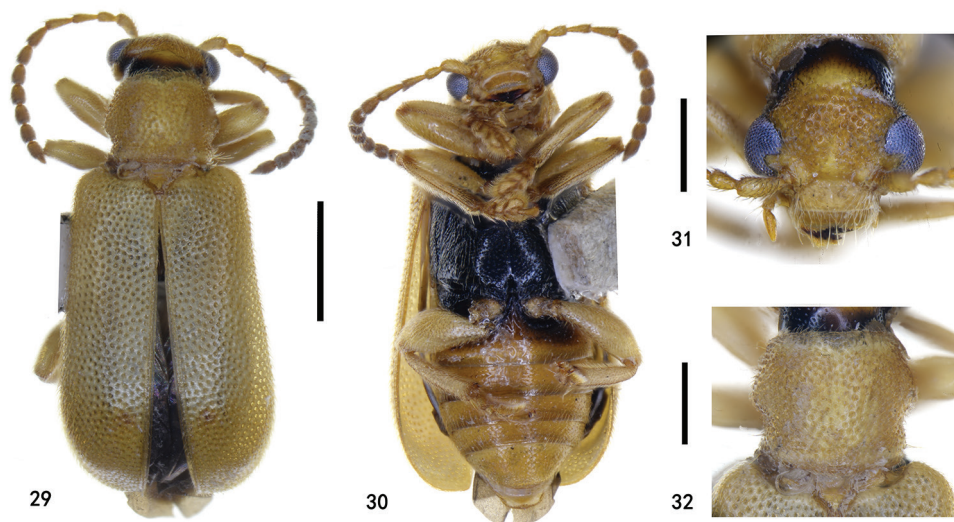
The external male genitalia of this species are similar to those of *Zeugophora* (*Pedrillia*) *annulata* Baly, 1873, *Zeugophora* (*Pedrillia*) *bicolor* Kraatz, 1879, *Zeugophora* (*Pedrillia*) *tricolor* Chen & Pu, 1962, but differs from them in having a slightly flattened and less curved median lobe in the lateral view, with the apex of the median lobe shorter and slightly broader.

***Zeugophora* (*Pedrillia*) *flavithorax* sp. nov.**

<http://zoobank.org/E25DF81C-67EF-410A-9855-AE2002ECE2B2>

Figures 29–37, 46–47

Specimens examined. **Holotype:** male, CHINA, Guizhou, Leishan, Leigong Shan National Nature Reserve, 26.36966N, 108.18724E / 1367 m, 2019.vii.14, Kaiqin Li coll. / Holotype, *Zeugophora* (*Pedrillia*) *flavithorax* sp. nov., des. by K.Q. Li & H.B.



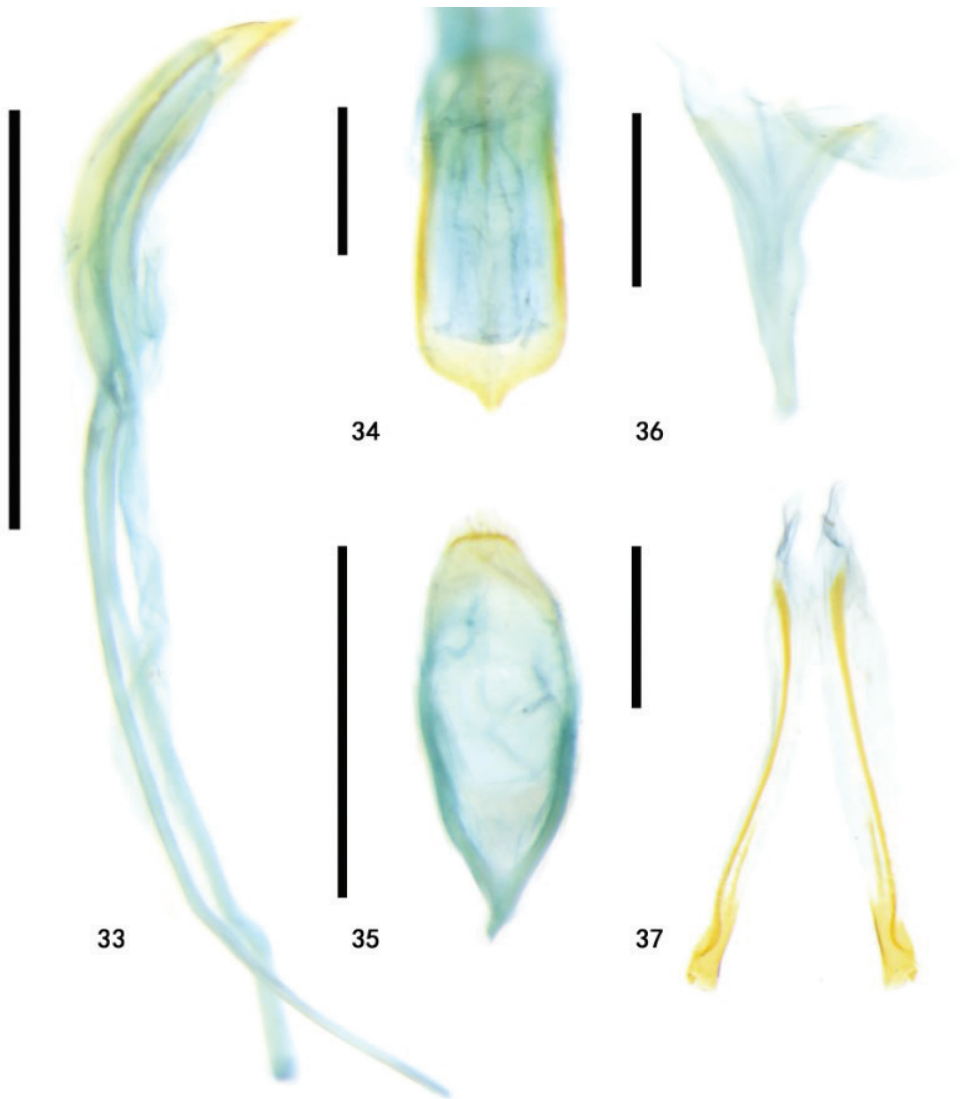
Figures 29–32. Holotype of *Zeugophora (Pedrillia) flavithorax* sp. nov., male **29** dorsal view **30** ventral view **31** head, anterior view **32** pronotum, dorsal view. Scale bars: 1.0 mm (**29, 30**); 0.5 mm (**31, 32**).

Liang, 2020 [red label]. **Paratypes** (1 male and 1 female): 1 female, same data as holotype but paratype *Zeugophora (Pedrillia) flavithorax* sp. nov., des. by K.Q. Li & H.B. Liang, 2020 [yellow label]; 1 male (IZCAS), CHINA, Guizhou, Leishan, Leigong Shan National Nature Reserve, 26.36966N, 108.18724E / 1367 m, 2019.vii.15, Kaiqin Li coll. / Paratype *Zeugophora (Pedrillia) flavithorax* sp. nov., des. by K.Q. Li & H.B. Liang, 2020 [yellow label].

Diagnosis. Head brown except occiput black, antennae, pronotum, elytra, prosternum, abdominal ventrites and legs brown, mesoventrite and metaventrite black, the pubescence of surfaces slightly yellow and transparent; median lobe short and broad, slightly curved in lateral view, lateral sides thin, apex slightly broad, middle of apical margin projecting and sharp; base of coxite with one elongate sclerotized area.

Description. BL = 4.0–4.2 mm, BW = 1.6–1.8 mm. Head brown except occiput black, antennae, pronotum, elytra, prosternum, abdominal ventrites, and legs brown, mesoventrite and metaventrite black.

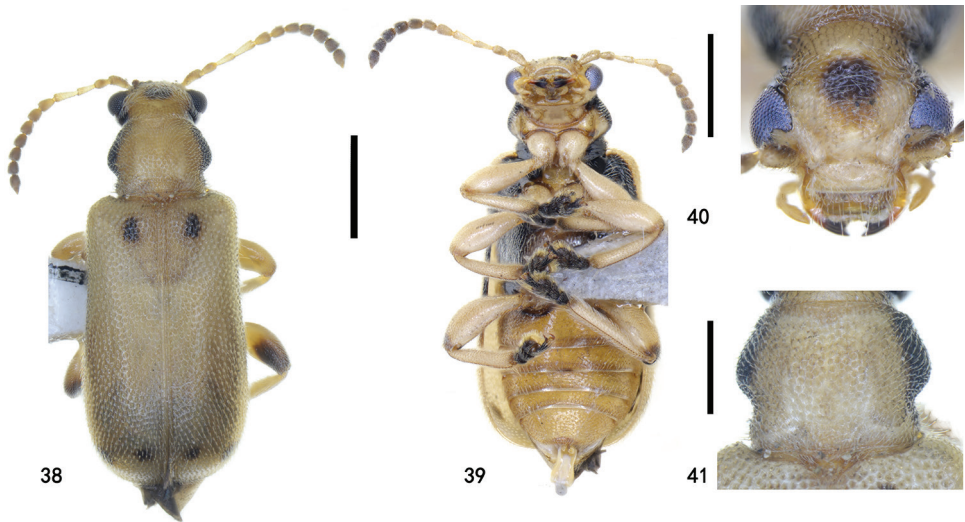
Head: eyes prominent, inner margin with distinct canthus; vertex coarsely and densely punctate and pubescent; occiput strongly constricted; frons finely punctate and pubescent; fronto-clypeal suture arching backwards centrally; clypeus rectangular, width $2.1 \times$ that of length, anterior margin and lateral with punctures and pubescence; labrum rectangular, narrower than clypeus, center of anterior portion emarginate, anterior and lateral portion with punctures and pubescence; antennae extended to exceed the humeri, antennomere 1 long, anterior portion slightly swollen, antennomere 2 short, half-length of antennomere 1, antennomere 3 slightly shorter than antennomere 1, antennomere 4 as long as antennomere 1, antennomeres 5–11 slightly thick, antennomere 5 shorter than antennomere 4, antennomere 6 slightly shorter than an-



Figures 33–37. Types of *Zeugophora* (*Pedrillia*) *flavithorax* sp. nov., genitalia **33–36** male genitalia of holotype **33** median lobe and median struts, lateral view **34** median lobe, dorsal view **35** tegmen, dorsal view **36** spiculum, dorsal **37** ovipositor of paratype, dorsal view. Scale bars: 0.5 mm (**33**, **35**); 0.2 mm (**34**, **36**, **37**).

tennomere 5, antennomeres 7–10 slightly shorter than antennomere 6, antennomere 11 as long as antennomere 6, acute at apex, antennomeres 1–4 sparsely punctate and pubescent, antennomeres 5–11 densely punctate and pubescent.

Thorax: PW/PL = 1.2–1.3; anterior margin slightly flattened; posterior margin arching backwards in the center; length of anterior margin nearly equal to posterior margin; anterior and posterior groove shallow; lateral margin gradually expanding

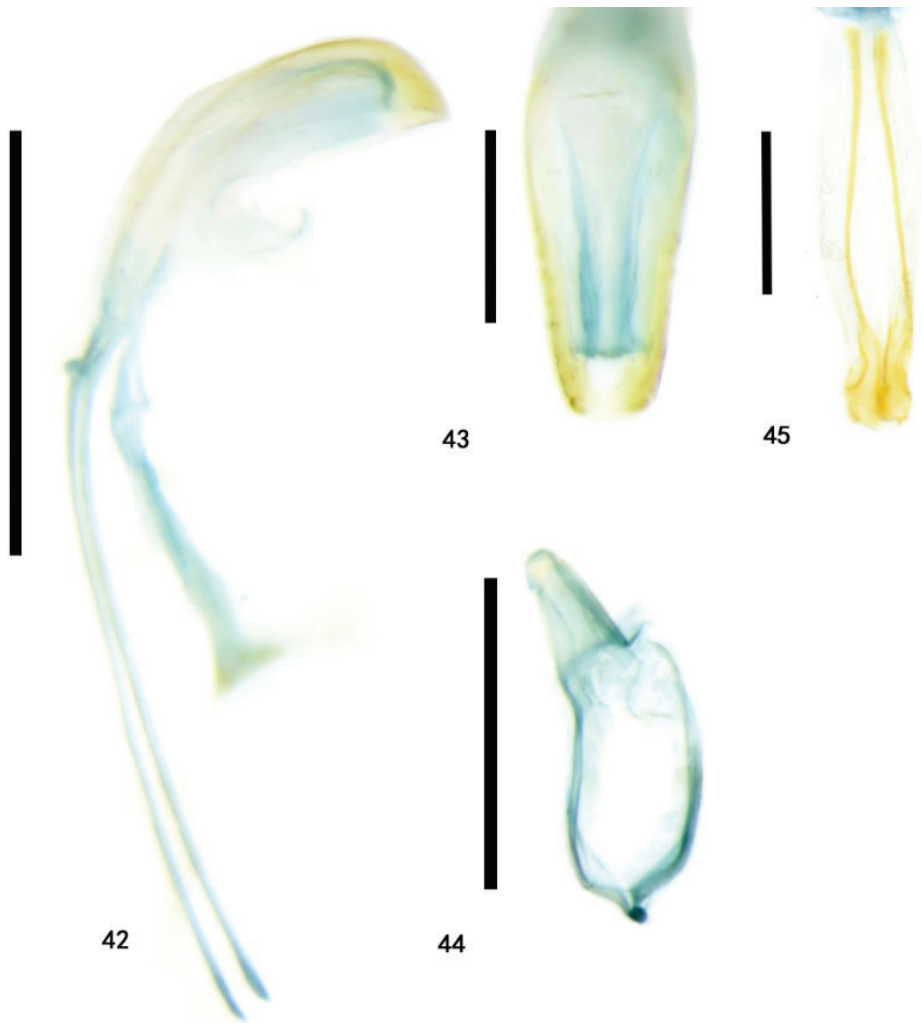


Figures 38–41. *Zeugophora (Pedrillia) maculata* (Chûjô) from Guizhou, female **38** dorsal view **39** ventral view **40** head, anterior view **41** pronotum, dorsal view. Scale bars: 1.0 mm (**38, 39**); 0.5 mm (**40, 41**).

from anterior angle to the middle, then constricted, lateral tubercle projecting, narrow and blunt; disc slightly convex, coarsely punctate and pubescent. Scutellum triangular, apical margin slightly emarginate, sparsely punctate and pubescent.

Elytra: EL/EW = 1.5–1.7; elytral humeri slightly projecting antero-laterally, humeral groove shallow; lateral margin gradually expanding from anterior to posterior, the elytra widest behind the middle, apex rounded; disc slightly convex, weakly depressed at basal one third, coarsely punctate and pubescent; elytra base finely punctate and pubescent; suture with one or two rows of punctures and pubescence; epipleura narrow, two rows of punctures and pubescence at base and one row at apex.

Abdomen and legs: underside sparsely punctate and pubescent. Legs moderately long, femora robust. Pygidium moderately long, punctate, and pubescent, apical portion exposed; apical margin of last abdominal ventrite slightly prominent in male (slightly emarginate in female). Median lobe weakly sclerotized, short and broad, slightly curved in lateral view, dorso-central portion entirely membranous, lateral sides thin, apex slightly broad, middle of apical margin projecting and sharp; median struts rod-shaped, widely separated from each other, approximately $1.8 \times$ as long as median lobe; base of tegmen V-shaped, tegminal ring sub-oval, paramere sub-trapezoid and apical margin slightly rounded, apical margin with long setae; endophallus membranous, with paired granulated and weakly sclerotized area. Spiculum long Y-shaped, apical margin slightly flattened. Ovipositor long, sub-rectangular, base slightly broader than apex, divided into two vaginal palpi, each side with one baculus, extending from the base of the ovipositor backwards to the coxite, baculus base slightly broad, apex slightly narrowed, sclerotized, two baculi proximal to each other at base; coxite strongly sclerotized, sub-rectangular, apical margin with setae, lateral sides of apical margin with stylus; stylus, cylindrical, small and distinct.



Figures 42–45. Genitalia of *Zeugophora (Pedrillia) maculata* (Chûjô) from Guizhou, genitalia **42–44** male genitalia **42** median lobe and median struts, lateral view **43** median lobe, dorsal view **44** tegmen, dorsal view **45** ovipositor, dorsal view. Scale bars: 0.5 mm (**42, 44**); 0.2 mm (**43, 45**).

Distribution. China (Guizhou).

Host plant. Symplocaceae.

Etymology. The specific name *flavithorax* refers to the yellow color of the prothorax.

Remarks. This species is most similar to *Zeugophora (Pedrillia) maculata* (Chûjô, 1941) (Figs 38–41) in the shape of the external morphology and color, but differs in having the pronotum and elytra without a black spot, the pubescence of surfaces slightly yellow and transparent, the median lobe apex slightly broad and the apical margin projecting and sharp, paramere of tegmen sub-trapezoid, and the base of the coxite with one elongate sclerotized area (pronotum and elytra with a black



46



47

Figures 46–47. Habitat of *Zeugophora (Pedrillia) flavithorax* sp. nov. (Guizhou, Leigong Shan).

spot, the pubescence of surfaces pale yellow, median lobe apex slightly narrowed and downward, apical margin slightly round without projecting, paramere of tegmen tongue-shaped, base of coxite without elongate sclerotized area in *Z. (P.) maculata* (Figs 38–45)).

***Zeugophora (Pedrillia) nigricollis* (Jacoby, 1885), new record**

Figures 48–57

Pedrillia nigricollis Jacoby, 1885: 195. Type locality: Japan, Wada-tôge. Type depository: NHMUK. Synonymized as *Pedrillia bicolor* Kraatz, 1879 by Kimoto 1986: 309.

Zeugophora (Pedrillia) nigricollis: Crowson, 1946: 95 [Japan]; Gressitt and Kimoto 1961: 24, 27; Chûjô 1954: 51; Chûjô and Kimoto 1961: 119; Kimoto 1964: 108.

Zeugophora (Pedrillia) bicolor: Kimoto, 1986: 309; Jolivet 1957: 12; Kimoto and Takizawa 1994: 6, 99, 267; An and Kwon 2002: 272; Silfverberg 2010: 334; Li and Liang 2018: 133.

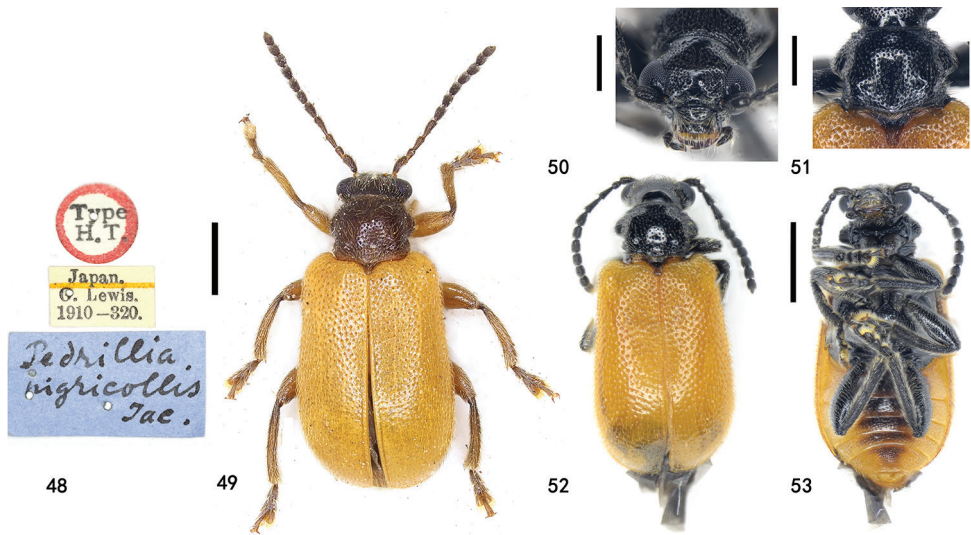
Zeugophora bicolor: Gressitt, 1945: 139; An and Kwon 1995: 91–92; Takizawa 2006: 2; Rodríguez-Mirón 2018: 291.

Zeugophora nigricollis (Jacoby, 1885). Restored as a valid species by Takemoto 2019: 15–19.

Specimens examined. Type: H. T. / Japan. G. Lewis. 1910–320. / *Pedrillia nigricollis* Jac.

Non-types (KIZ). Two males, CHINA, Ningxia, Jingyuan, Liupan Shan National Nature Reserve, Erlonghe Forest Farm, 35.33041N, 106.35110E, 2088 m, 2018. vii.27, Kaiqin Li coll.

Diagnosis. Elytra brown, head, antennae, pronotum, scutellum, legs, and under-side black (except lateral sides of abdominal ventrites brown); median lobe slender, curved in lateral view, apex of median lobe triangular and blunt.

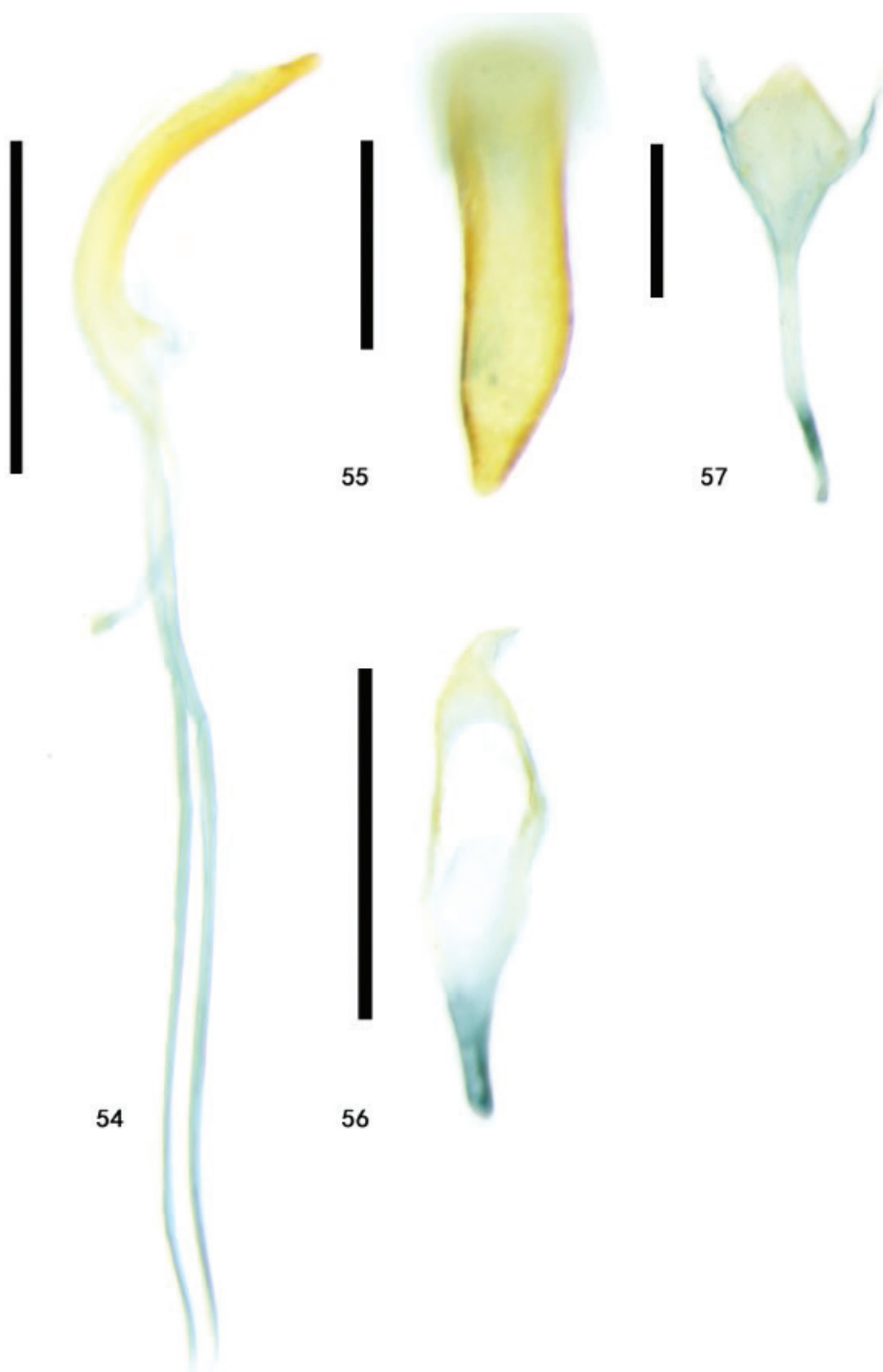


Figures 48–53. *Zeugophora nigricollis* Jacoby **48** holotype label **49** holotype dorsal view **50–53** specimens from Ningxia, male **50** head, anterior view **51** pronotum, dorsal view **52** dorsal view **53** ventral view. Scale bars: 1.0 mm (**49, 52, 53**); 0.5 mm (**50, 51**).

Description. BL = 3.8–4.5 mm, BW = 1.9–2.2 mm. Elytra brown, head, antennae, pronotum, scutellum, legs, and underside black (except lateral sides of abdominal ventrites brown).

Head: eyes prominent, inner margin with distinct canthus; vertex coarsely and densely punctate and pubescent, the middle slightly smooth without puncture; occiput strongly constricted; frons densely punctate and pubescent; fronto-clypeal suture slightly arching backwards centrally; clypeus rectangular, width $2.1 \times$ that of length, anterior and lateral margin densely punctate and pubescent; labrum rectangular, narrower than clypeus, center of anterior portion emarginate, anterior and lateral with punctures and pubescence; antennae extended to exceed the humeri, antennomere 1 long, anterior portion slightly swollen, antennomere 2 short, half-length of antennomere 1, antennomere 3 slightly shorter than antennomere 1, antennomere 4 as long as antennomere 1, antennomeres 5–11 slightly thick, antennomere 5 shorter than antennomere 3, antennomeres 6–10 slightly shorter than antennomere 5, antennomere 11 as long as antennomere 5, acute at apex, antennomeres 1–4 sparsely punctate and pubescent, antennomeres 5–11 densely punctate and pubescent.

Thorax: PW/PL = 1.5–1.6; anterior margin slightly flattened; length of anterior margin nearly equal to posterior margin; posterior margin arching backwards in the center; anterior groove distinct laterally, shallow medially; posterior groove shallow; lateral margin gradually expanding from anterior angle to the middle, then constricted, lateral tubercle broad and round; disc convex, densely punctate and pubescent, basal portion of each side slightly prominent; each anterior and posterior angle with two or three long setae. Scutellum triangular, apical margin flattened, sparsely punctate and pubescent.



Figures 54–57. Genitalia of *Zeugophora (Pedrillia) nigricollis* Jacoby from Ningxia, male genitalia **54** median lobe and median struts, lateral view **55** median lobe, dorsal view **56** tegmen, dorsal view **57** spiculum, dorsal view. Scale bars: 0.5 mm (**54**, **56**); 0.2 mm (**55**, **57**).

Elytra: EL/EW = 1.3–1.5; elytral humeri projecting antero-laterally, humeral groove shallow; lateral margin gradually expanding from anterior to posterior, the elytra widest behind the middle, apex round; disc flattened, weakly depressed at basal one third, coarsely punctate and pubescent; elytra base densely punctate and pubescent; suture with one row of punctures and pubescence; epipleura narrow, with one row of punctures and pubescence.

Abdomen and legs: underside sparsely punctate and pubescent. Legs moderately long, femora robust, meso- and meta-tibia slightly curved. Pygidium moderately long, punctate, and pubescent; apical margin of last abdominal ventrite slightly prominent. Median lobe sclerotized, slender, curved in lateral view, lateral sides thick and parallel, dorso-central portion membranous with basal one third tubular, apex triangular and blunt, apex slightly leftward; median struts rod-shaped, widely separated from each other, approximately $2.6 \times$ as long as median lobe; base of tegmen V-shaped, tegminal ring sub-oval, paramere long and triangular with apical margin with long setae; endophallus membranous, with paired granulated and weakly sclerotized area. Spiculum long and Y-shaped, with apical margin projecting.

Distribution. China (Ningxia).

Host plant. *Euonymus elatus* (Celastraceae) (Figs 22, 23).

Remarks. Takemoto (2019) restored *Zeugophora* (*Pedrillia*) *nigricollis* Jacoby, 1885 to a valid species from the synonymy of *Z. (P.) bicolor* (Kraatz, 1879). This species is most similar to *Zeugophora* (*Pedrillia*) *bicolor* Kraatz, 1879 in having the black and brown color, but differs in having the pronotum entirely black, the median lobe less curved in the lateral view, the median lobe slender, with the apex of the median lobe triangular and blunt (the base of the pronotum is slightly brown, median lobe is more curved in the lateral view, median lobe slightly broader, and apex of median lobe narrower and sharper in *Z. (P.) bicolor*).

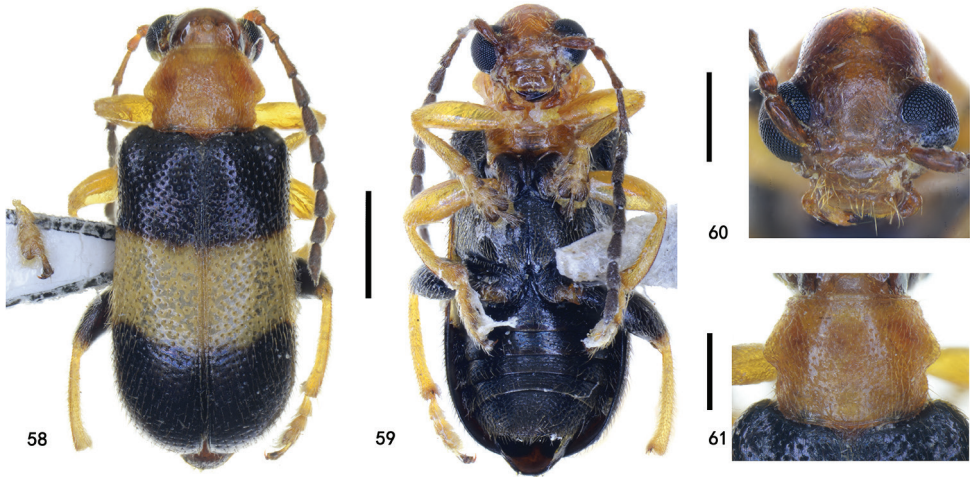
***Zeugophora* (*Pedrillia*) *trifasciata* sp. nov.**

<http://zoobank.org/04D8AB26-4E47-45C3-8D75-3228A5E6A641>

Figures 58–66

Specimens examined. **Holotype:** male, CHINA, Yunnan, Ailaoshan, Xujiaba, 1986.viii.21 / Holotype, *Zeugophora* (*Pedrillia*) *trifasciata* sp. nov., des. by K.Q. Li & H.B. Liang, 2020 [red label]. **Paratype,** 1 male, same data as holotype but 1986.x.31 / Paratype *Zeugophora* (*Pedrillia*) *trifasciata* sp. nov., des. by K.Q. Li & H.B. Liang, 2020 [yellow label].

Diagnosis. Head brown; antennae black, with basal four antennomeres brown; pronotum yellowish brown; scutellum dark brown; elytra dark blue with a pale yellow transverse band from epipleura to suture on the center; underside dark blue except prosternum and mesoventrite yellowish brown; legs yellowish brown except hind femur dark blue; antennae elongate, lateral sides of elytra sub-parallel; dorso-central portion of the median lobe with one sclerite from base to apical portion.

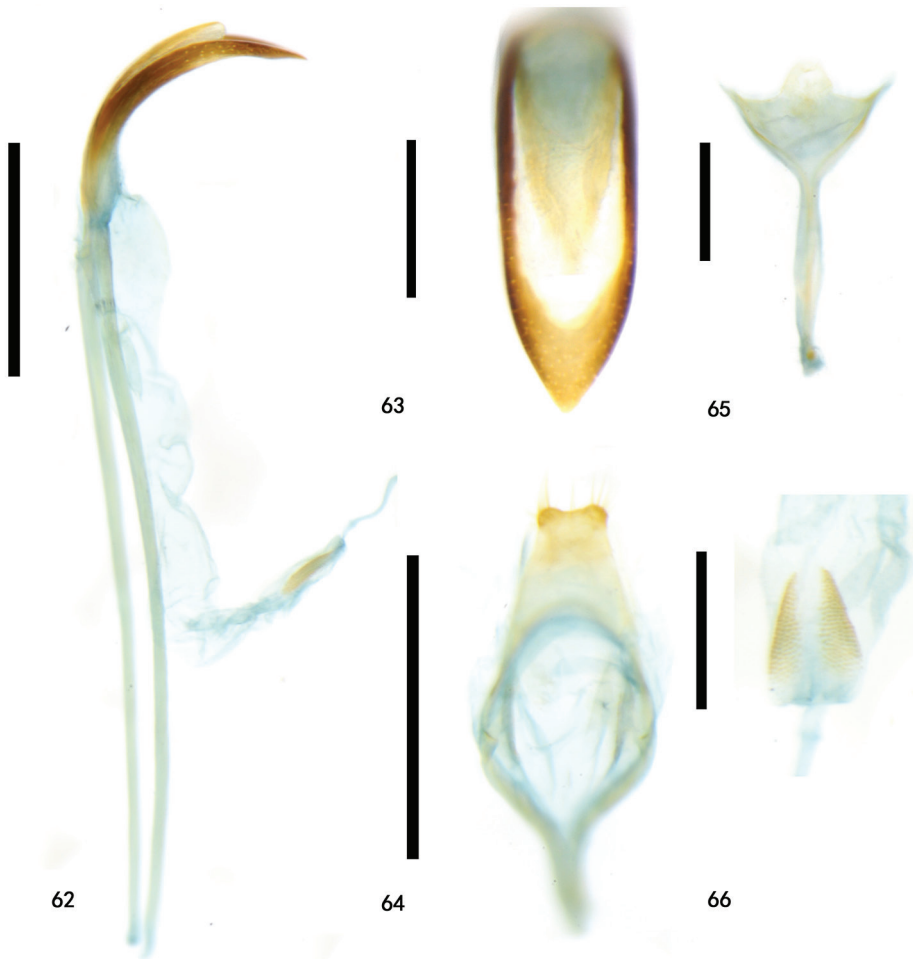


Figures 58–61. Holotype of *Zeugophora (Pedrillia) trifasciata* sp. nov., male **58** dorsal view **59** ventral view **60** head, anterior view **61** pronotum, dorsal view. Scale bars: 1.0 mm (**58**, **59**); 0.5 mm (**60**, **61**).

Description. BL = 4.3–4.4 mm, BW = 1.7–1.9 mm. Head brown; antennae black, with basal four antennomeres brown; pronotum yellowish brown; scutellum dark brown; elytra dark blue with a pale yellow transverse band from epipleura to suture on the center; underside dark blue except prosternum and mesoventrite yellowish brown; legs yellowish brown except hind femur dark blue.

Head: eyes prominent, inner margin with distinct canthus; center of vertex sparsely punctate and pubescent, lateral sides densely punctate and pubescent; occiput strongly constricted; frons finely punctate and pubescent, center slightly concave; clypeus rectangular, width $2.4 \times$ that of length, central portion slightly prominent, punctate and pubescent laterally, separated from frons by deep fronto-clypeal suture; shallow oblique groove from inner margin of upper portion of eye to fronto-clypeal suture; labrum rectangular, slightly narrower than clypeus, anterior margin with punctures and pubescence; antennae slender, exceeding half the length of body, antennomere 1 long and swollen, antennomere 2 short, shorter than half the length of antennomere 1, antennomere 3 slightly shorter than antennomere 1, antennomere 4 subequal to antennomere 1, antennomere 5 equal to 6 in length, and two-thirds as long as antennomere 4, antennomeres 7–10 equal to each other in length and slightly shorter than antennomere 5, antennomere 11 slightly longer than antennomere 5 and apex acute, antennomeres 1–4 sparsely punctate and pubescent, antennomeres 5–11 densely punctate and pubescent.

Thorax: PW/PL = 1.5–1.6; anterior margin slightly flattened; posterior margin arching backwards medially; length of anterior margin nearly equal to posterior margin; anterior and posterior groove indistinct; lateral sides subparallel at anterior portion, then gradually expanding in the middle, strongly constricted posterior to the middle; lateral tubercle prominent and blunt; with a shallow oblique groove behind the lateral tubercle to basal portion; disc convex, with fine punctures and pubescence,



Figures 62–66. Holotype of *Zeugophora (Pedrillia) trifasciata* sp. nov., male genitalia **62** median lobe and median struts, lateral view **63** median lobe, dorsal view **64** tegmen, dorsal view **65** spiculum, dorsal view **66** sclerotized area of endophallus. Scale bars: 0.5 mm (**62**, **64**); 0.2 mm (**63**, **65**, **66**).

basal portion slightly depressed; basal portion of each side slightly prominent. Scutellum trapezoid, slightly emarginate at apex, densely punctate and pubescent.

Elytra: EL/EW = 1.6–1.7; elongate, elytral humeri projecting antero-laterally, humeral groove somewhat deep; lateral sides subparallel; disc slightly flattened, base slightly prominent and posterior slightly depressed, base densely punctate and pubescent, apex coarsely punctate and pubescent; suture with one row of punctures and pubescence; epipleura narrow, base with two rows of punctures and pubescence, apex with one row of punctures and pubescence.

Abdomen and legs: underside sparsely punctate and pubescent. Legs moderately long, femora robust, mid- and hind-tibiae slightly curved. Pygidium moderately long,

apex portion exposed. Last abdominal ventrite with apical margin slightly prominent. Median lobe flattened, slightly curved in lateral view, sides and apex sclerotized, dorso-central portion with one sclerite from base to apical portion, sides moderately thick, apical portion tongue-shaped, apex sharp; median struts rod-shaped, widely separated from each other, approximately $2.8 \times$ as long as median lobe; basal portion of tegmen Y-shaped, tegminal ring sub-round, paramere trapezoid, apical margin of paramere slightly emarginate in middle, lateral sides with setae; endophallus membranous, with paired granulated and sclerotized area. Spiculum Y-shaped, apical margin trifid.

Distribution. China (Yunnan).

Host plant. Unknown.

Etymology. The specific name *trifasciata* refers to the transverse bands on the elytra.

Remarks. This species is similar to *Zeugophora (Pedrillia) formosana* Gressitt, 1945 in having the transverse bands on the elytra, but differs in having the antennae elongate, the lateral sides of the elytra subparallel, the base of the pronotum without a distinct transverse groove (antennae shorter, lateral sides of elytra gradually expanding posteriorly from the base, broadest behind the middle, and the base of the pronotum with a transverse groove in *Z. (P.) formosana*).

This species is also similar to *Zeugophora (Pedrillia) pallidicincta* Gressitt, 1945 in color, but differs in having the elytra elongate and the lateral sides subparallel (elytra broad and short, the lateral sides expanding posteriorly from the base, widest behind the middle in *Z. (P.) pallidicincta*).

The median lobe of this species is distinct with the dorsal portion of the median lobe having a long triangular sclerite (Figs 62, 63).

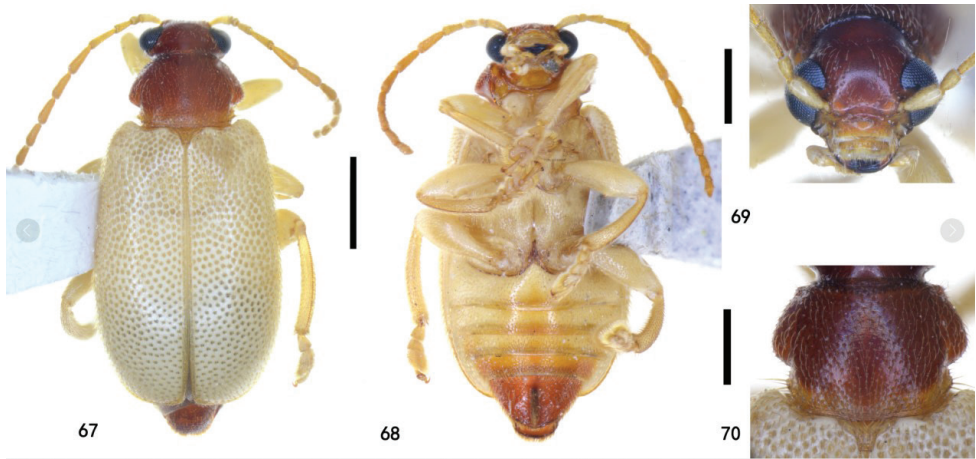
***Zeugophora (Pedrillia) yuae* sp. nov.**

<http://zoobank.org/92BC423A-5713-4D74-856B-F08CA4B0C047>

Figures 67–79

Specimens examined. Holotype: male, CHINA, Yunnan, Xishuangbanna, Nabanhe National Nature Reserve, Dayangdi, 22.24610N, 100.60303E / 911 m, 2019.v.10, Kaiqin Li coll. / Holotype, *Zeugophora (Pedrillia) yuae* sp. nov., des. by K.Q. Li & H.B. Liang, 2020 [red label]. **Paratypes** (4 males and 3 females): 1 male and 1 female (1 male in IZCAS), same data as holotype but paratype *Zeugophora (Pedrillia) yuae* sp. nov., des. by K.Q. Li & H.B. Liang, 2020 / [yellow label]; 3 males and 2 females (1 female in IZCAS), CHINA, Yunnan, Xishuangbanna, Nabanhe National Nature Reserve, Dayangdi, 22.24610N, 100.60303E / 911 m, 2019.v.11, Kaiqin Li coll. / Paratype *Zeugophora (Pedrillia) yuae* sp. nov., des. by K.Q. Li & H.B. Liang, 2020 / [yellow label].

Diagnosis. Head, prothorax, pygidium, last abdominal ventrite reddish brown; antennae and scutellum brown; elytra, mesoventrite, metaventrite, most portion of abdominal ventrites, legs pale brown; pubescence pale brown; antennae slender, extended to half the length of body; median lobe slender, slightly curved in lateral view, dorso-central portion membranous with basal one half tubular and other portion flattened, apex triangular, blunt.



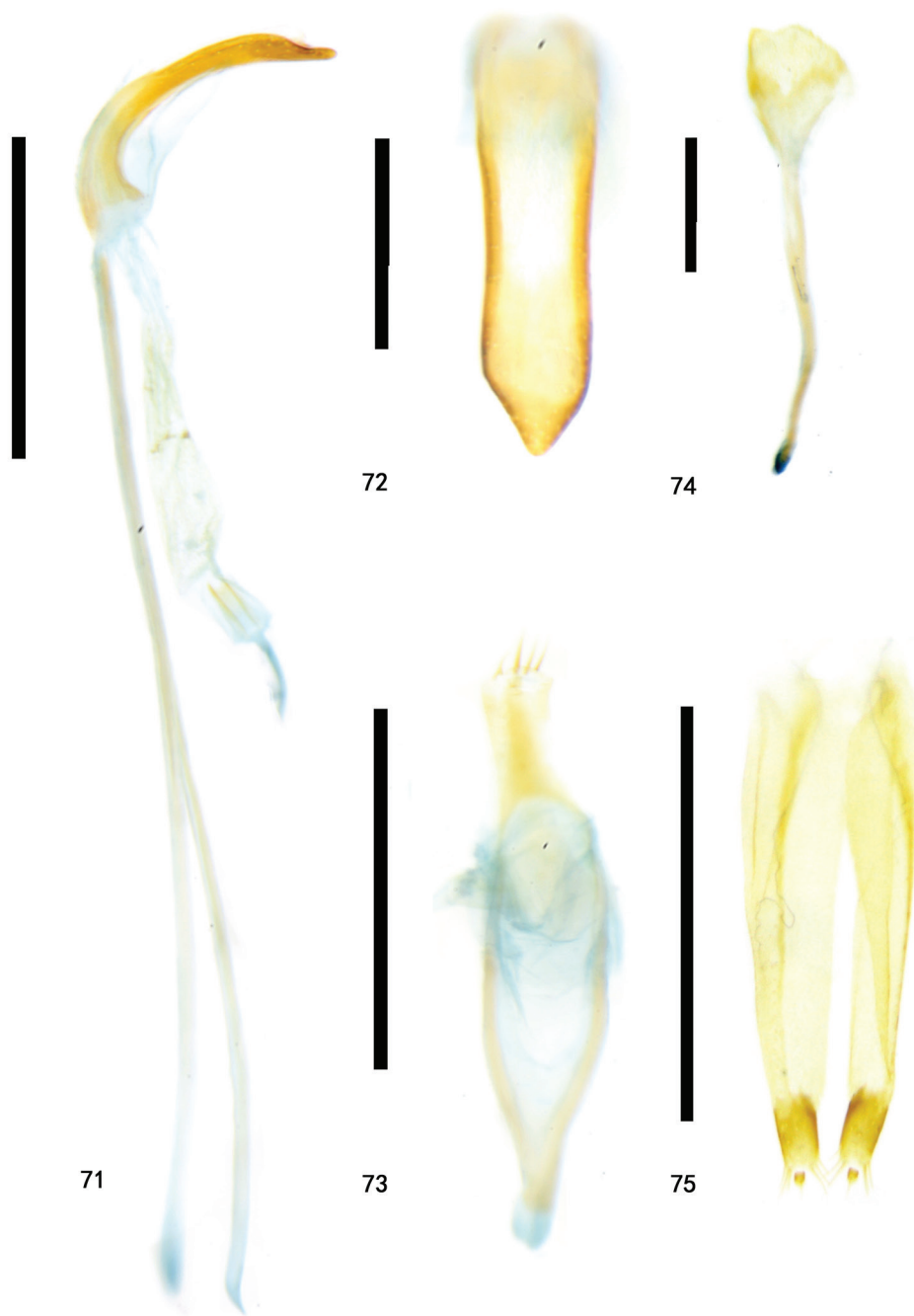
Figures 67–70. Holotype of *Zeugophora (Pedrillia) yuae* sp. nov., male **67** dorsal view **68** ventral view **69** head, anterior view **70** pronotum, dorsal view. Scale bars: 1.0 mm (**67**, **68**); 0.5 mm (**69**, **70**).

Description. BL = 3.3–4.7 mm, BW = 1.6–2.2 mm. Head, prothorax, pygidium, last abdominal ventrite reddish brown; antennae and scutellum brown; elytra, mesoventrite, metaventrite, most portion of abdominal ventrites, legs pale brown; pubescence pale brown.

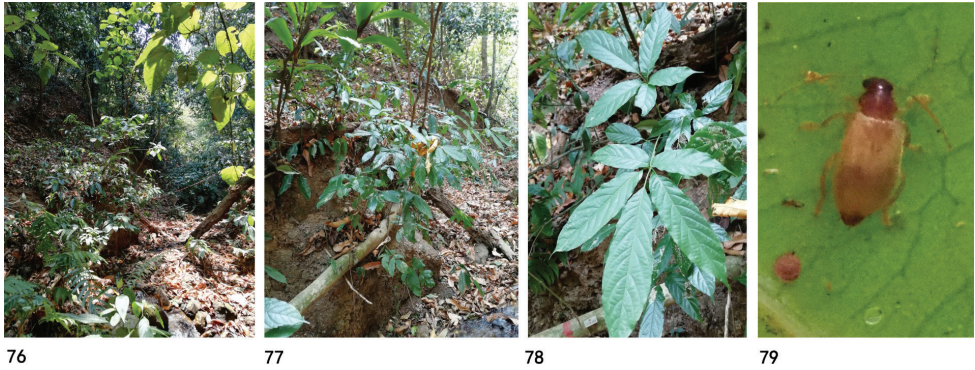
Head: eyes prominent, inner margin with distinct canthus; vertex smooth, lateral sides near eyes finely and sparsely punctate and pubescent; occiput strongly constricted; frons finely punctate and pubescent; fronto-clypeal suture slightly arching backwards; clypeus rectangular, width $2.2 \times$ that of length, anterior and lateral margin with punctures and pubescence; labrum rectangular, slightly narrower than clypeus, center of anterior portion emarginate, anterior and lateral portion with punctures and pubescence; antennae slender, extending to half the length of body, antennomere 1 long, anterior portion slightly swollen, antennomere 2 short, less than half the length of antennomere 1, antennomere 3 slightly shorter than antennomere 1, antennomere 4 as long as antennomere 1, antennomeres 5–11 slightly thick, antennomere 5 as long as antennomere 4, antennomeres 6–8 slightly shorter than antennomere 5, antennomere 9 as long as antennomere 10 and slightly shorter than antennomere 8, antennomere 11 as long as antennomere 10, acute at apex, antennomeres 1–4 sparsely punctate and pubescent, antennomeres 5–11 densely punctate and pubescent.

Thorax: PW/PL = 1.5–1.7; anterior margin slightly flattened; posterior margin arching backwards centrally; length of anterior margin nearly equal to posterior margin; anterior groove shallow laterally, indistinct medially; posterior groove deep laterally, shallow medially; lateral margin gradually expanding from anterior angle to beyond the middle, then constricted, lateral tubercle broad and round; disc slightly convex, sparsely punctate and pubescent, each side of the basal portion slightly depressed. Scutellum trapezoid, apical margin slightly flattened, sparsely punctate and pubescent.

Elytra: EL/EW = 1.3–1.5; elytral humeri projecting antero-laterally, humeral groove shallow; lateral margin gradually expanding from anterior to posterior, the



Figures 71–75. Types of *Zeugophora (Pedrillia) yuae* sp. nov., genitalia **71–74** male genitalia of holotype **71** median lobe and median struts, lateral view **72** median lobe, dorsal view **73** tegmen, dorsal view **74** spiculum, dorsal **75** ovipositor of paratype, dorsal view. Scale bars: 0.5 mm (**71**, **73**); 0.2 mm (**72**, **74**, **75**).



Figures 76–79. Habitat, host plant and adult of *Zeugophora* (*Pedrillia*) *yuae* sp. nov. **76** habitat (Yunnan, Nabanhe) **77–78** host plant (*Vitex quinata*) **79** dorsal view.

elytra widest behind the middle, apex rounded; disc slightly convex, weakly depressed at basal one third, coarsely punctate and pubescent; base of elytra finely punctate and pubescent; suture with one row of punctures and pubescence; epipleura narrow, two rows of punctures and pubescence at base and one row at apex.

Abdomen and legs: underside sparsely punctate and pubescent. Legs moderately long, femora robust, mid- and hind-tibiae slightly curved; the mid-femur with a small ventral tooth in the male (without a small ventral tooth in the female). Pygidium long, with punctures and pubescence, most exposed, apical margin slightly truncated; last abdominal ventrite center with one ridge, apical margin slightly prominent in male (last abdominal ventrite center without ridge, apical margin slightly straight in female). Median lobe sclerotized, slender, slightly curved in lateral view, dorso-central portion membranous with basal half tubular and other half flattened, apex triangular, blunt; median struts rod-shaped, widely separated from each other, approximately $3.5 \times$ as long as median lobe; base of tegmen V-shaped, tegminal ring slightly sub-parallel, parameres tongue-shaped, apical margin with long setae; endophallus membranous, with paired granulated and weakly sclerotized area. Spiculum long, spoon-shaped. Ovipositor long, sub-rectangular, base broad, apex slightly narrowed, divided into two vaginal palpi, each side with one baculus, extending from the base of the ovipositor backwards to the coxite, baculus base slightly broad, apex slightly narrowed, base sclerotized and gradually less sclerotized from base to apex, two baculi proximal to each other at base; coxite strongly sclerotized, cylindrical, apical margin with long setae; stylus, cylindrical, small and distinct.

Distribution. China (Yunnan).

Host plant. *Vitex quinata* (Lamiaceae) (Figs 77, 78).

Etymology. The specific name *yuae* is proposed in memory of Professor Peiyu Yu, who has greatly contributed to the taxonomy of the Chinese Megalopodidae.

Remarks. This species is similar to *Zeugophora* (*Pedrillia*) *tricolor* Chen & Pu, 1962 in having a reddish-brown pronotum and pale brown elytra, but can differ from it in

having the head reddish brown, antennae brown and slender, the base of the pronotum without a distinct tubercle, the median lobe less curved in the lateral view, the apex of the median lobe slightly broader and blunt, and the ratio of median struts / median lobe approximately 3.5 (head black, antennomeres 1–4 pale brown, antennomeres 5–11 black, antennae shorter and slightly robust, the base of the pronotum with a slight tubercle, the median lobe more curved in the lateral view, the apex of the median lobe slightly narrower and sharper, and the ratio of median struts / median lobe approximately 2.2 in *Z. tricolor*).

Acknowledgments

The authors wish to thank Professor Peiyu Yu (IZCAS) for her valuable help in our early Megalopodidae study; Dr. Hongliang Shi (IZCAS) for providing specimens of *Zeugophora turneri* Power; Dr. Likun Zhang (KIZ) and Dr. Xinpu Wang (Ningxia University) for their help in collecting specimens; Professor Jinshuang Ma (Shanghai Chenshan Botanical Garden) for identifying plants of the family Celastraceae and Dr. Bo Pan (Xishuangbanna Tropical Botanical Garden, Chinese Academy of Sciences) for identifying plants of the family Lamiaceae; Dr. Chris Reid (Australian Museum) for helping to improve the language of the manuscript; we also wish to thank Leigong Shan National Nature Reserve and Nabanhe National Nature Reserve for supporting our field work. This work is supported by grants from the National Natural Science Foundation of China (Grant No. 31702047), the Biological Resources Programme, Chinese Academy of Sciences (KFJ-BRP-017-21), and the National Special Fund for Basic Research of Science and Technology (2015FY210300).

References

- Baly JS (1873) Catalogue of the phytophagous Coleoptera of Japan, with descriptions of the species new to science. The Transactions of the Royal Entomological Society of London 1873: 69–99. <https://doi.org/10.1111/j.1365-2311.1873.tb00637.x>
- Bryant GE (1943) New species of African Zeugophora (Orsodacninae, Col.) and synonymy. Annals and Magazine of Natural History Series 11, 10(64): 245–248. <https://doi.org/10.1080/03745481.1943.9728014>
- Chen SX, Pu FJ (1962) Notes on Chinese Megalopodinae. Acta Entomologica Sinica 11(Suppl.): 114–118.
- Chûjô M (1935) Chrysomelidae of Loo-Choo Archipelago (I). Transactions of the Natural History Society of Formosa Taihoku 25: 136–139.
- Chûjô M (1937) Descriptions of four new species of the genus *Pedrillia* Westwood, with a list of the species known from the world (Col. Chrysomelidae). Transactions of the Natural History Society of Formosa Taihoku 27: 146–151.

- Chûjô MA (1952) Taxonomic study on the Chrysomelidae (Insecta-Coleoptera) from Formosa. Part IV Subfamily Zeugophorinae. The Technical Bulletin of the Kagawa Agricultural College 3(3): 166–183.
- Chûjô MA (1953) A taxonomic study on the Chrysomelidae with special reference to the fauna of Formosa. The Technical Bulletin of the Kagawa Agricultural College 5(2): 121–136.
- Gressitt JL, Kimoto S (1961) The Chrysomelidae (Coleopt.) of China and Korea, Part 1. Pacific Insects Monograph 1A: 1–299.
- Crowson RA (1946) A revision of the genera of the chrysomelid group Sagrinae (Coleoptera). The Transactions of the Royal Entomological Society of London 97(4), 75–115. <https://doi.org/10.1111/j.1365-2311.1946.tb00276.x>
- Jacoby M (1885) Descriptions of the phytophagous Coleoptera of Japan, obtained by Mr. George Lewis during his second journey, from February 1880 to September 1881. Part I. Proceedings of the Scientific Meetings of the Zoological Society of London 1885: 190–211. [pl. XI] <https://doi.org/10.1111/j.1096-3642.1885.tb02894.x>
- Jacoby M (1908) The fauna of British India, including Ceylon and Burma. Coleoptera, Chrysomelidae. Vol. 1. Taylor & Francis, London, 534 pp. [2 pls]
- Kasap H, Crowson RA (1985) The studies on the ovipositors and 8th abdominal segments of species of Bruchidae and Chrysomelidae (Coleoptera). Türkiye Bitki Koruma Dergisi 9(3): 131–145.
- Kimoto S, Gressitt J (1979) Chrysomelidae (Coleoptera) of Thailand, Cambodia, Laos and Vietnam. 1. Sagrinae, Donaciinae, Zeugophorinae, Megalopodinae and Criocerinae. Pacific Insects 20(2–3): 191–256.
- Kraatz G (1871) Eine neue deutsche Criocerinen-Art. Berliner Entomologische Zeitschrift 15: 162. <https://doi.org/10.1002/mmnd.18710150212>
- Lee CF, Cheng HT (2007) The Chrysomelidae of Taiwan 1. Sishou-Hills Insect Observation Network Press, Taipei, 199 pp. [In Chinese]
- Li KQ, Liang HB, (2018) A check list of the Chinese Zeugophorinae (Coleoptera: Megalopodidae), with new synonym, new record and two new species of subgenus *Pedrillia* from China. Zootaxa 4455(1): 127–149. <https://doi.org/10.11646/zootaxa.4455.1.5>
- Li KQ, Liang ZL, Liang HB (2013) Two new species of the genus *Temnaspis* Lacordaire, 1845, (Coleoptera: Chrysomeloidea: Megalopodidae) from China and Myanmar, with notes on the biology of the genus. Zootaxa 3737(4): 379–398. <https://doi.org/10.11646/zootaxa.3737.4.3>
- Li KQ, Wang YZ, Dong DZ, Zhang LK (2015) Catalog of insect type specimens preserved at the Kunming Institute of Zoology, Chinese Academy of Science with corrections of some specimens. Zoological Research 36(5): 263–284.
- Medvedev LN (1985) Zeugophorinae and Megalopodinae (Coleoptera, Chrysomelidae) fauna of Vietnam. Insects of Vietnam 1985: 59–63.
- Medvedev LN (1997) To the knowledge of Zeugophorinae (Chrysomelidae) of the Old World. Russian Entomological Journal 6(3–4): 65–69.
- Monrós F (1959) Notas sobre Chrysomelidae. Acta Zoologica Lilloana 17: 1–24.
- Power JA (1863) Description of a new British *Zeugophora*. The Zoologist 21: 8735.

- Reid CAM (1989) The Australian species of the tribe Zeugophorini (Coleoptera: Chrysomelidae: Megalopodinae). *General and Applied Entomology* 21: 39–48.
- Reid CAM (1992) A new species of *Zeugophora* Kunze from Java (Coleoptera: Chrysomelidae: Megalopodinae). *Treubia* 30: 403–408.
- Reid CAM (1995) A cladistic analysis of subfamilial relationships in the Chrysomelidae sensu lato (Chrysomeloidea). In: Pakaluk J, Slipinski SA (Eds) *Biology, phylogeny, and classification of Coleoptera papers celebrating the 80th Birthday of Roy A. Crowson*. Muzeum i Instytut Zoologii PAN, Warsaw, 559–631.
- Schöller M (2009) First records of Zeugophorinae from New Caledonia with description of two new species (Coleoptera: Megalopodidae, Zeugophorinae). *Entomologische Zeitschrift Stuttgart* 119(5): 195–198.
- Sekerka L, Vives E (2013) Review of Zeugophorinae of New Guinea, with description of *Zeugophorella* gen. nov. and new synonyms of *Zeugophora* (Coleoptera: Megalopodidae). *Acta Entomologica Musei Nationalis Pragae* 53(2): 747–762.
- Snodgrass RE (1935) *Principles of insect morphology*. McGraw-Hill Book Company, New York, 667 pp.
- Takemoto T (2019) Revision of the genus *Zeugophora* (Coleoptera, Megalopodidae, Zeugophorinae) in Japan. *Zootaxa* 4644(1): 001–062. <https://doi.org/10.11646/zootaxa.4644.1.1>
- Tan JJ, Yu PY, Li HX, Wang SY, Jiang SQ (1980) *Economic insect fauna of China, Coleoptera: Chrysomeloidea (I)*. Science Press, Beijing, 213 pp. [In Chinese].
- Verma KK (1996) Inter-subfamily relations among Chrysomelidae (Coleoptera) as suggested by organization of the male genital system. In: Jolivet P, Cox ML (Eds) *Chrysomelidae Biology*, vol. 1, Classification, Phylogeny and Genetics. Academic Publishing, Amsterdam, 317–351.
- Warchałowski A (2010) *The Palearctic Chrysomelidae: identification keys. Volume 1*. Natura optima dux Foundation, Warsaw, 629 pp.
- Yu PY, Yang XK (1994) Biological studies on *Temnaspis nankinea* (Pic) (Chrysomelidae: Megalopodinae). In: Jolivet, PH, Cox ML, Petitpierre E (Eds) *Novel Aspects of the Biology of Chrysomelidae, Series Entomologica*, Vol. 50. Kluwer Academic Publishers, Dordrecht, 527–531. https://doi.org/10.1007/978-94-011-1781-4_39